

## IN THIS ISSUE:

- \* **Urban Underserved Track (UUT) Students Participate in Community Engagement Projects**
- \* **Community Opioid Response Program (CORP) participates in youth education**
- \* **1st Class Graduates from WCAHEC Personal Care Provider Course**
- \* **Cortez Public Library hosts "Discover Health" Exhibit**

## UPCOMING EVENTS::

- \* **Nurse Educators in the Rockies Annual Conference**  
July 11 - 13 Vail
- \* **ECER Conference (Engaging Community in Education and Research )**  
September 21-23  
Breckenridge, Colorado

## AHEC Scholars

In the most recent competitive funding renewal from the Health Resources Services Administration (HRSA) of the Department of Health and Human Services, all Area Health Education Centers were required to start planning for a new program called AHEC Scholars. We at Colorado AHEC are working to gather information about how to best fulfil the requirements of this mandate while responding to the needs of Coloradans.





University of Colorado Anschutz Medical Campus

**Colorado Area Health Education Center Program**

13120 E. 19<sup>th</sup> Avenue, MS-F433

Aurora, CO 80045



Greetings from Colorado AHEC,

We are excited to announce AHEC Scholars. This program is being launched by AHECs across the country in alignment with our new HRSA 5 year grant. The next few pages contains background information on AHEC and the AHEC Scholars program. Briefly the AHEC Scholars is a program designed to help prepare a diverse group of students preparing to work in all roles of healthcare. These students will be recruited from around the state with the hope that they will then provide healthcare services to rural and underserved populations of our state. We will be partnering with health professions programs to prepare 90-150 students per year to be a part of transforming healthcare.

They will be equipped to:

- Work interprofessionally
- Be ready to integrate behavioral health into their practice no matter their role
- Address social determinants of health
- Practice with cultural competency
- Respond to emerging health issues (In CO we have identified Opioid Abuse, Marijuana use - especially in pregnancy, oral health, access to mental health care, suicide prevention and health effects of oil and gas exploration. This list is will grow and evolve with feedback from folks like you.)
- Understand and know how to work towards the practice transformation quadruple aim:
  - Improve Population Health
  - Improve Patient Satisfaction
  - Reduce the Cost of Care
  - Improve Provider satisfaction

If you would like your school or organization to be involved in this program please contact your regional AHEC office.

Sincerely,

Mark Deutchman, MD

Professor, Dept. of Family Medicine

Director, Colorado AHEC Program Office

# Preparing the Next Generation of Health Professionals with Next Generation Skills

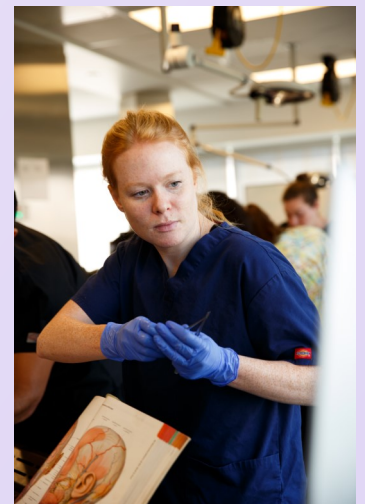
## AHEC Scholars Program Description

- Elective addition to an existing program that culminates in the completion of and/or graduation from a degree or certificate program in a health care field.
- Will have a formal application process with defined eligibility criteria.
- New cohorts each academic year of the project period (per AHEC center).
- Provide an interdisciplinary curriculum with discipline-specific points of entry, exit and objectives.
- Provide clinical, didactic, and community-based and
- team-based training activities.
- Based on 6 Core Topic Areas
  1. Interprofessional Education
  2. Behavioral Health Integration
  3. Social Determinants of Health
  4. Cultural Competency
  5. Practice Transformation
  6. Current/Emerging Issues
- Require 40 hours per year of didactic education outside of the traditional curriculum.
- A minimum of 40 hours per year of clinical education must consist of participation in team-based training.
- One AHEC Scholars Program per AHEC Program (1 program in Colorado).
- Minimum of 15-25 new student cohort per center each year; the number of centers determines the total number of students per academic year of the project period. There should be a balanced diversity of health disciplines.
- Individual centers may have fewer than 15-25 students as long as the total number required for the AHEC Scholars Program under the direction of the AHEC Program is correct.
- COAHEC is required to have 90-150 students.
- Placements should be in rural and/or underserved settings.
- One year follow-up is required.



## Eligible Programs

Certified Nursing Assistant - CNA  
Dental Assistant  
Dental Hygienist  
Dentistry – DDS/DMD  
Medicine - MD  
Nursing – 2-year ADN or 4-year BSN -resulting in an RN licensure  
Occupational Therapist – OT  
Osteopathy - DO  
OT Assistant  
Paramedic – EMT  
Pharmacy - PHARM D  
Physical Therapist – PT  
Physicians Assistant - PA  
PT - Assistant  
Public Health – MPH and BPH  
Social Work – MSW





# Learning Objectives for the 6 Core Topic Areas

## 1. Inter-professional Education

CC - IPE: Respect, value, and communicate effectively with individuals of other professions to promote and advance the health of individuals and populations.

### **Learning Objectives:**

#### **Values/Ethics for Interprofessional Practice:**

- Understand the roles, ethics, and professional obligations of each of the Healthcare professions.
- Be ready to work with individuals of other professions to maintain a climate of mutual respect and shared values.

#### **Roles and Responsibilities:**

- Engage in team-based learning in order to develop effective inter-professional communication techniques.
- Use the knowledge of one's own role and those of other professions to appropriately assess and address the health care needs of patients and to promote and advance the health of populations.

#### **Interprofessional Communication:**

Communicate with patients, families, communities, and professionals in health and other fields in a responsive and responsible manner that supports a team approach to the promotion and maintenance of health and the prevention and treatment of disease.

#### **Teams and Teamwork:**

- Demonstrate an understanding of effective leadership, team development, and team effectiveness practices that promote inter-professional collaboration.
- Apply relationship-building values and the principles of team dynamics to perform effectively in different team roles to plan, deliver, and evaluate patient/population-centered care and population health programs and policies that are safe, timely, efficient, effective, and equitable.



## 2. Behavioral Health Integration

CC – BHI: Identify, assess, and address behavioral health needs in a practice-based healthcare setting.

### **Learning Objectives:**

- Describe approaches and understand evidence for integrating behavioral health into primary care.
- Develop effective strategies for behavioral health engagement to improve patient health outcomes. Understand the process of integrating SBIRT-based protocol into practice.

## 3. Social Determinants of Health

CC – SDH: Define, assess, and report on how social determinants of health impact population health outcomes.

### **Learning Objectives:**

- Describe how the social determinants of health impact population health outcomes disparities utilizing a life course perspective.
- Define, assess and report on the health status of populations, social determinants of health, and factors contributing to health promotion and disease prevention. Identify examples of effective health policies and health promotion strategies improving social determinants of health and how they promote health equity.

## 4. Cultural Competency

CC– CC: Evaluate the responsibility and impact of culturally competent care within the healthcare system.

### **Learning Objectives:**

**Define:** Culture, Diversity, Equity, Equality, Inclusion, Race, Ethnicity, LGBT terms, etc.

- Describe the impact of cultural competent care on health equity.
- Demonstrate an understanding of the roles and responsibilities of healthcare professionals regarding cultural competence.
  - Understand the history of culture, discrimination, and oppression within the context of the Healthcare system.
  - Emphasize guiding principles of diversity and inclusivity
  - Discuss power dynamics
- Discuss how culture influences personal experience Within the healthcare System including:
  - Varying cultural perspectives on health, pain, and suffering.



- Define and personally assess implicit biases, privileges, And stereotyping.
- Understand and utilize effective culturally competent communication strategies.
  - Discuss culturally appropriate greetings as well As cultural taboos (dos/don'ts)
  - Provide resources for further research on Specific cultures.
- Understand cultural traits
  - Collectivist vs. Individualist Cultures
  - High vs. Low Context Cultures (spoken vs. unspoken rules)
  - Monochronic v. Polychronic Cultures (time sensitivity)
  - Past, Present, or Future Orientation
  - Low v. High Power Distance Cultures
- Explore community immersion, engagement, and ethnographic observation.
  - Possibly require a short (2 hour) cultural Immersion with a reflective writing assignment.
  - Reflective writing assignment on your own culture.
- Practice listening, communicating with limited English populations and cultural humility.
- Understand the importance of culturally appropriate health messaging.
  - Translation when appropriate
  - Using people in photos who represent the population being communicated with Avoiding coded messages

## **5. Practice Transformation**

CC – PT: Understand the transformation of clinical practice in response to a rapidly changing healthcare environment.

### **Learning Objectives:**

- Understand the components of the quadruple aim framework: better care, better patient experience, lower costs, and joy in practice.
- Understand the key elements of the Patient-Centered Medical Home (PCMH): and its impact on transforming providers' role in healthcare.
- Describe models of care coordination: across the complex healthcare system.
- Understand Bodenheimer's 10 Building Blocks: Engaged Leadership, Data Driven Improvement, Empowerment, Team-Based Care, Patient -Team Partnership, Population Management, Continuity of Care, Prompt Access to care, comprehensiveness and Care Coordination, and template of Future Demonstrate fiscal literacy in regard to the healthcare System.
- Explore the potential of Quality Improvement methods

## **6. Emerging Health Topics**

CC – ET: Demonstrate an understanding the impact of emerging health issues on the population , and strategies to better address these issues in the health- care setting.

### **Learning Topics:**

- Opioid Epidemic: Colorado's response
- Marijuana: Understanding the pharmacology, physical, mental, financial, and social Consequences
- Oral Health: Access to care and integration into primary care
- Mental Health: Access to care
- Suicide Prevention
- Health Effects of Oil and Gas Extraction



# Urban Underserved Track (UUT) Students Participate in Community Engagement Projects

The Urban Underserved Track's efforts are focused on growing its outreach component to engage with the communities they hope to serve as health professionals. With the aim of establishing rapport, track students continue to collaborate with homeless shelters to offer foot care and have also reached out to a nearby high school where they hosted an immunization and a vision clinic. Community engagement is the most requested type of interaction track students seek.

According to physician assistant student Yael Gottlieb the foot care clinic is, "a really worthwhile event, and wonderful opportunity to interact with and help the homeless population in a unique way."



The track's annual foot care clinic is the most valued event and has attracted outside attention as it will now be mirrored by CU Colorado Springs branch this summer with the direction of track students and staff. On this the 6<sup>th</sup> year that students partner up with the Denver Rescue Mission, Samaritan House and St. Francis Center they served 56 homeless individuals.



Josten Overall, a medical student in the track reflects, "while the impact may seem small, minor improvements in foot health and foot health practices can promote major beneficial health implications." The most important understanding students take with them from speaking with patients and

learning about their life, is how foot problems affect quality of life.

Urban Underserved Track (UUT) students also participate in a longitudinal community project as part of their participation in the track. A handful of them are working with the New America School (NAS), a public charter high school with the mission to empower new immigrants, English language learners and academically underserved students with educational tools to maximize their potential success. Upon meeting with the NAS staff and hearing of the need of immunizations, vision screenings and glasses among their population, Urban Underserved Track students reached out to Tri-County Health Department and Denver Lions club and coordinated two clinics to meet the identified needs.

At the start of the year, about 90 New America School students were non-compliant with immunization regulations. As reported by Anne Comaskey, school nurse, approximately 60 students were present the day of the clinic to receive immunizations. Only 30 of them received vaccinations, with some students needing as many as 9 vaccines. Constraints on time did not allow for more, however Ms. Comaskey went on to mention that this was their most successful attempt at getting students immunized.



During the vision clinic, UUT and Lions Club volunteers screened and tested about 120 people. They handed out about 64 eyeglasses, 8 reading glasses, and about 25 vouchers to those who did not find the correct fit at the clinic. About 50 of attendees were between the ages of 3 and 21. Annie Trujillo, New America School Principal, was thankful and said that "it was an incredible opportunity for so many of our students and their family members to walk home that evening with the gift of improved vision."

Both events were a great success, due to the dedication of those involved and the partnerships formed. Also eloquently stated by the Denver Lions Club Director of International Programs, Susy Osorio Kinsky, "to help our community alone is almost impossible; partnerships are a huge component in making the difference." Urban Underserved Track participants are surely making a difference and the track is certainly fulfilling their motto of serving those in need, and training those who serve.

Written by: Tania Soto-Valenzuela



## 14th Annual SLV Nightingale Dinner

Congratulations to eleven Valley nurses who were honored at the 14th SLV Nightingale Dinner on February 16, 2018 at Adams State University.

Reina Chacon, Monica Hinds, Zina Horton, Laura Lewis, Misty Palacios, Patricia Robertson, Vivian Rodriguez, Leroy Romero, T.J. Salazar, LouAnn Cheslock Skinner and Nadia Yanez were recognized for their commitment to their patients and providing excellent nursing care.

The dinner was attended by family members and co-workers. Vivian Rodriguez, LouAnn Cheslock Skinner and Nadia Yanez were selected as luminaries for the statewide event in Denver on May 12, 2018.

Thank you to SLV Health, Rio Grande Hospital, SLV Area Health Education Center, Valley Wide Health Systems and SLV Federal Bank for their generous donations that made this event possible.



Reina Chacon, Monica Hinds, Zina Horton, Laura Lewis, Misty Palacios, Patricia Robertson, Vivian Rodriguez, Leroy Romero, T.J. Salazar, LouAnn Cheslock Skinner and Nadia Yanez

## ***UPSTREAM Together- Preventing Mental, Emotional, and Behavioral Health Problems in the San Luis Valley***

collaboration propelled by the San Luis Valley Area Health Education Center, 2040 Partners for Health, and the High Plains Research Network aiming to **prevent** MEB problems in the San Luis Valley, northeast Colorado, and the neighborhoods surrounding the University of Colorado Anschutz campus.

Since the Fall of 2017, a group of 14 residents from the San Luis Valley have met in conjunction with health professionals and researchers, to formulate a plan to address MEB problems in their area. This process was called Boot Camp Translation. During these meetings participants have learned about evidence-based strategies and health information around MEB problems, identified and prioritized MEB issues in their community, and determined what the local community needs to be known and done around these issues. Currently the San Luis Valley UPSTREAM Together group is in the planning stages of getting these messages out to the community, as well as planning to obtain funding for future MEB prevention programming.

Mental, emotional, and behavioral (MEB) problems have been consistently identified as a top priority for Colorado communities, often their greatest health concern. UPSTREAM! is a Colorado



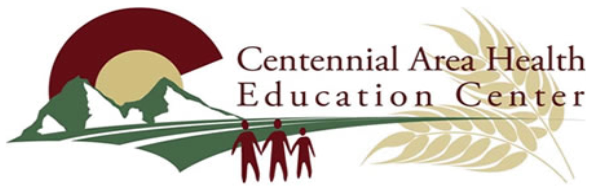
## Mosaic Consortium

The SLV AHEC's Multidisciplinary Overdose & Substance Abuse Interorganizational Consortium of the San Luis Valley (MOSAIC) Newsletter, which is distributed to over 600 partners, will be sending out its second issue in late April. This issue will include an update on the SLV AHEC's SHARRP program (SLV

Health Access Risk Reduction Project) and its change of

location that will be occurring by July 2018; education on safe disposal and safe storage; locations in the SLV where Narcan can be obtained; efforts in the Valley to help pregnant women who are dealing with substance abuse; and the new Alto program that will administer alternative medications to opioids in the three emergency rooms in Alamosa.





## 2018 Regional Nurse Nightingale Awards

*Nightingale Awards Recognizes Outstanding Local Nurses*

The Centennial Area Health Education Center (CAHEC) hosted the 33rd Annual Regional Nightingale Awards Ceremony on March 3rd at 5:00pm at the Panorama Room at the University of Northern Colorado. This event was created to acknowledge the outstanding nurses in our region who's hard work continues to improve health through advocacy. Innovation and leadership. This award named after Florence Nightingale in honor of her many years of service as a leader, innovator and advocate to the nursing profession. In society today, we have many pioneers working to continue to revolutionize nursing and make a difference in our community. This year we recognized 23 regional nominees for their exemplary efforts and four exceptional student nursing leaders.

### Nurse Winners:

Non-Clinical Advocacy—April Kendall, Banner East Morgan County Hospital

Clinical Advocacy—Maggie Delvin, UC Health

Non-Clinical Innovation—Kristin Lynch, Banner East Morgan County Hospital

Clinical Innovation—Nate Hinze, UC Health, Lifeline

Non-Clinical Leadership—Brenda Tousley, Banner Health fort Collins Medical Center

Clinical Leadership—Jodi Olson, Cardiovascular Institute of Northern Colorado, Banner Medical Group

### Student Winners:

Josie Briggs, University of Northern Colorado

Jenee Eldridge, Front-range Community College

Rylee Protman, University of Northern Colorado

Abbey Wilson, AIMS Community College



CAHEC is committed to addressing health workforce shortages and health disparities in the CAHEC region, through education and local collaboration. The Nightingale Awards ceremony constantly encourages and engages professionals not only in potentially achieving this distinguished honor of "Nurse of the Year", but creating healthy outcomes for their communities through leadership, advocacy, and innovation. In total, one hundred and fifty people attended this event and we are so proud of our winners and we wish them well at the state Nightingale to be held in May 2018.



## NEC In the Rockies

Annual Conference 2018

July 11- 13 | Vail Colorado

### *Visioning in Vail: Innovation and Inspiration*

Join us from July 9 – 13 in the beautiful Rocky Mountains of Colorado! The Nurse Educator's Conference in the Rockies will be held in Vail, Colorado this summer at the Vail Mountain Marriott Resort. With an amazing preconference series and a full range of educational opportunities all week, the focus of the conference is on Innovation and Inspiration.

Dr. Susan Luparell will lead us off with a conversation about Incivility in Nursing, with a keynote from Aden Hogan on Inspirational Leadership and a closing keynote from Amanda Mahoney on how to Keep Burnout At Bay With Mindfulness, Compassion, and Purpose.





## 1<sup>st</sup> Class Graduates from WCAHEC Personal Care Provider Course

In March WCAHEC embarked on a 17-month training program focused on increasing the number of skilled personal care providers in Mesa County. Colorado lawmakers created the Skilled Worker Outreach, Recruitment, and Key Training Act – the “WORK Act” in 2015, to increase the awareness of, and enrollment in, Colorado’s skilled worker training programs.

Through a grant provided under the WORK Act, WCAHEC will enroll 175 students in the Personal Care Provider Program between January 15, 2018 and May 30, 2019. Of the 175 enrolled, 125 will successfully complete the training program and their employment status will be monitored.

WCAHEC estimates that the program’s completers will fill 150 PCP/QMAP industry employment positions within Mesa County.

“So far, we’ve held two classes and we are about to hold our third and largest class next week,” says Georgia Hoaglund, Executive Director of WCAHEC.

So far, 24 students have graduated the week long training course and of those, 16 passed their QMAP certification and 21 received CPR/First Aid certifications. 8 were interviewed by the organizations at which they job shadowed and less than a month later 5 are already employed as personal care providers. 1 graduate has applied to the LPN program at Colorado Mesa University.

The target population for the Personal Care Provider training program includes men and women, 17-40 years of age who are not recently employed or underemployed, single parents on public assistance, incumbent workers like housekeepers and cooks in need of promotion, and career changers to the

health professions who possess an intent of advancing up the health care career ladder. Those interested in registering for the training should call the WCAHEC office at: (970) 434-5474



March 1, 2018: First graduating class of WCAHEC’s Personal Care Provider Course





### Parts 2 & 3 of TBI Series an Overwhelming Success in Western Colorado

More than 100 providers and community members came together to learn about the unique service needs of high intellectual ability individuals experiencing mild to moderate brain injuries at the last two of Dr. Edith Johnston's seminar's.

Thanks to a grant from the Brain Injury Alliance of Colorado. Tools for self-advocacy for high intellect brain injury survivors and stories of survivorship were also discussed.

Participants were able to attend in person or via the internet.

Dinner was provided.

Certificates were provided to each attendee. "This was a highly successful program with

outstanding participation across our region.



*Edith Johnston and special guest, speak to a packed house on Wednesday, February 7 during her 2<sup>nd</sup> TBI Seminar.*



We hope to be able to provide more TBI education and facilitate connections for providers and survivors alike," shares Georgia Hoaglund, Executive Director of WCAHEC.



### Community Leaders in Health Equity Moves to WCAHEC

After two other organizations backed out, The Colorado Trust asked WCAHEC to step in and recruit a group of 14 members for a 17 month in depth study on Health Equity. As a grant recipient of the Health Equity Learning Series, WCAHEC had originally applied for the larger Community Leaders in Health Equity grant. "We were disappointed when we learned we weren't chosen," explains Georgia Hoaglund, Executive Director of WCAHEC. Just weeks before the budget deadline a call from the Colorado Trust changed everything. In less than two weeks 14 members were recruited. Together they will embark on a journey of Health Equity Learning. The group will meet each month from April 2018 to August 2019.

The program includes 6 multiday convenings across the state, day long Regional Saturday events, with midpoint check ins in between. "We were scrambling to recruit members that met the grant's criteria, but it turned out there was an overwhelming interest in this topic, leaving us to fill our spots with members representing very diverse backgrounds," says Hoaglund. The first state wide convening will be held April 25-28 in Denver, CO.



**THE  
COLORADO  
TRUST**

*A Health Equity Foundation*

### Home Care of the Grand Valley to Utilizes WCAHEC Classroom for Employee Nurse Aid Skills Checks

On March 7, WCAHEC opened its doors to the staff of Home Care of the Grand Valley so they could utilize our classroom and Nurse Aid Training Facility as a testing center for their annual CNA skills check. "We are happy to partner with and offer assistance to any organization that employs our students," explains Georgia Hoaglund, Executive Director of WCAHEC.

Nearly 20 Certified Nursing Assistants had their skills checked as part of the annual program, designed to ensure that Home Care of the Grand Valley clients receive the best care possible.





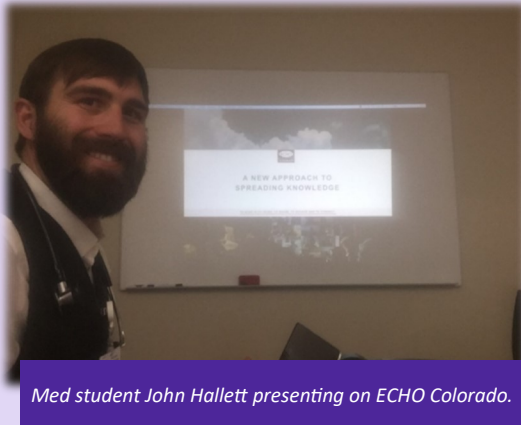
# Med Student Connects Rural Frontier Clinic to ECHO Colorado



While attending his Integrated Longitudinal Medicine Clerkship with Dr. Jarred Freese in Hotchkiss, CO this spring, third year Medical Student John Hallett was able to connect his clinic with ECHO (Extension for Community Health Outcomes) Colorado. ECHO Colorado seeks out thought leaders and experts in health fields and works with them to create learning series delivered in a way that creates a community where experts and peers share knowledge and experience using technology, not proximity, to connect.

Every ECHO brings together a facilitator who manages time and facilitates conversation and engagement, a presenter who delivers topic expertise for the session, a panel who provide their own perspective, knowledge and understanding of the designated topic and finally, participants who are able to expand their skill set and ability to provide better care and services to their local community, all without incurring the expense or hassle of travel.

Of the 5 medical professionals John connected with ECHO, 3 were Medical Doctors, 1 was a Nurse Practitioner and the other a Licensed Clinical Social Worker. They expressed interest in seeing future ECHOs on Geriatric Psych and Dementia Management, Behavioral Health and Complicated Psych (Bipolar/Schizophrenia/Addiction), Hepatitis C, Dermatology, Heart Failure, and CKD. Ideas for collaborations included the AAFP and AMA. They were also interested in whether CME was available.



## Cross-County Partnership

As Central Colorado AHEC's Education and Workforce Manager, my goal is to have some sort of presence in each of my 11 +1 counties. With my summer Health Careers Pre-Apprenticeship (HCPA) program, I am able to work with 5 of our counties all at the same time! Adams, Arapahoe, Denver, Douglas, and Jefferson county workforces not only contribute participants to my 3-week program, but also help with the planning, marketing, recruitment, and execution of the program as well. One of the biggest parts of being an AHEC is partnering with other organizations in order to make a societal or community impact.

This collaboration definitely checks all of those boxes. By having so many of my workforce partners at the table at the same time, we can leverage funding (which is always huge) and other resources to meet our common goals. As a result of our cross-county collaboration, we've added 2 employer partners as internship and shadowing sites for our graduates, Vivage Senior Living and Colavria Hospitality. This program has brought together some of my favorite people from across my region and I think that's a major reason why the program has been so successful.

While on the topic of success, I wanted to mention some of the successes of another healthcare institution in our area, Centura Health. Centura has recently been approved by the Department of Labor as a "Registered Apprenticeship" for Medical Assisting in multiple of their southern Denver locations. In the next 10 months, more than 30 participants will be accepted into their program and begin their journey towards being a Medical Assistant. Centura has been a great help to CCAHEC in our process of refining our HCPA to meet industry standards and I want to thank them for their support. The partnerships that CCAHEC has with institutions such as Centura and government agencies like our workforce partners are what really drive Central Colorado AHEC's work forward. Here's to new and valuable partnerships in 2018!





**CENTRAL**  
COLORADO AHEC

## COMMUNITY OPIOID RESPONSE PROGRAM (CORP) PARTICIPATES IN YOUTH EDUCATION

A 2016 survey of Colorado teens found that 99% of teens ages 15-17 and 100% of teens ages 12-14 did not misuse prescription pain killers or stimulants in the last month. Nevertheless, teen curiosity and access to prescription drugs have increased since 2013. That is why, the Community Opioid Response Program led by the grant partner, Rise Above Colorado, has made it one of their priorities to educate Colorado's youth (ages 12-17) about safe use of prescription drugs using the lesson, *Not Prescribed*.

*Not Prescribed* is a classroom-based lesson empowering teens with the science and the stories to understand the risks of misusing prescription drugs and the skills to "rise above." This science-based, interactive lesson strives to help students be advocates for their own health, as well as their peers'. Lessons feature facilitated discussion around: what are prescription drugs, proper use, the developing brain and the pressures that teens face, and risk and protective factors in healthy decision making.

CORP members, Brody Montoya and Katie Lazar, of Central Colorado AHEC, have been teaching the *Not Prescribed* across the Denver metro area. They have partnered with several schools and extra-curricular programs to present the lesson in a variety of settings, such as the classroom, school assemblies, and health career programs. Surveys are issued before and after the lesson and have indicated an overall greater understanding of proper prescription medication use and risks associated with misuse. Students generally report an increased knowledge of how to talk to peers they fear are misusing prescription drugs, and feeling more comfortable in doing so.

Rise Above is one of many valuable youth prevention resources in the area.

IThrive utilizes group therapy, experiential learning, and



parent education to provide early intervention for teens struggling with drugs and alcohol abuse.

Aurora Substance Abuse Prevention Coalition (ASAP) focuses on prevention by providing healthy alternatives for youth and positive social norming campaigns. This lesson is available online and approved for use throughout the state.

<https://iriseaboveco.org/colorado-teen-drug-survey/>

<http://riseaboveco.org/articles/RAC-datasheet-painkillers.pdf>

If you have any questions or would be interested in having the *Not Prescribed* lesson in your area, please contact us at [katie@centralcoahec.org](mailto:katie@centralcoahec.org).



Empowering youth to a life free of drug abuse



**Community Opioid  
Response Program**

## Four Area Nurses to be recognized at State Nightingale Event in Denver

Four area nurses were selected as Luminaries and will represent the Southeastern Colorado Area Health Education Center at the Statewide Nightingale Luminary Awards Gala in Denver on May 12<sup>th</sup>. The four Luminaries, along with 11 other nominees from the 16 county service region, were honored at the 2018 Southeastern Colorado Regional Nightingale Nurse Recognition Event on March 30<sup>th</sup>. The four luminaries are Kristen Blair (Pueblo County), Cassondra Franco (Chaffee County), Christine Gray (Pueblo County), and Jacinda Heintzelman (Fremont County).



The 2018 Southeastern Colorado Nightingale nominees are as follows: **Back row (Left to right):** Christine Gray, Lisa Barr, Tara Yoder, Peggy Berkey, Suzette Boyer, and Gerald Taylor. **Front row (Left to right):** Jacinda Heintzelman, Rosemary Mooney, Cassondra Franco, and Lisa Walton.  
Not Pictured: Kristen Blair, Susan Goemmer, Eva White, Kerrie Keck, and Cristi Romans

Photo Credit: Bliss Photography

Southeastern Colorado AHEC in partnership with Colorado State University-Pueblo School of Nursing and Southern Colorado Association of Hispanic Nurses organized the annual event to recognize Southeastern Colorado nurses. SECAHEC appreciates the invaluable partnerships with Colorado State University (CSU)-Pueblo School of Nursing and the Southern Colorado Association of Hispanic Nurses (SCAHN). The School of Nursing volunteers collaborated with us on the dinner caterer, music, and enabled the nursing student organization to create and set the table centerpieces. The Southern Colorado Association of Hispanic Nurses volunteers coordinated and solicited for the silent auction and collected over 75 items. In addition, one volunteer each from CSU-Pueblo and SCAHN emceed the evening event. Our partnership with the two organizations enabled SECAHEC to have a successful and enjoyable Nightingale event.



# CORTEZ PUBLIC LIBRARY HOSTS “DISCOVER HEALTH/DESCUBRE LA SALUD” TRAVELING EXHIBITION



**Cortez** — *Discover Health/Descubre la Salud* is a Colorado-based traveling exhibition that explores the nation’s most serious public health issues (diabetes, obesity, and cardiovascular health), especially among underserved and rural populations. It also encourages youth, especially those from at-risk communities, to pursue careers in health care professions. The exhibit will be on display at Cortez Public Library from April 4<sup>th</sup> 2018 to July 2<sup>nd</sup> 2018.

Getting people interested in science can be a challenge, but *Discover Health/Descubre la Salud* strives to make it fun with suitcase-sized, table-top interactives, engaging anatomical models, compelling media pieces, computer-based interactives, and portable graphic panels.

Cortez Public Library will also offer a related series of public events to bring health education programming to children, teens, and adults through strategic partnerships between community members, educators, and health professionals.

“We are proud that Cortez Public Library was selected to be one of ten sites in Colorado to host the *Discover Health/Descubre la Salud* exhibit,” said Library Director Eric Ikenouye. “We think people of all ages and backgrounds will find that an exhibition about how the human body works and healthy living ideas will be understandable, inspirational, and relevant. We hope the whole community will visit the exhibit and participate in the programs that are offered.”



Cortez Public Library is located at 202 N Park St. The exhibition is free and open to the public during library hours, Monday-Thursday 9:00 AM to 7:00 PM, Friday 9:00 AM to 4:00 PM and Saturday 10:00 AM to 4:00 PM.

The exhibition will be accompanied by a series of programs and events, including a meet and greet with pediatrician Dr. John Pearsall on May 2<sup>nd</sup> from 5:00 to 6:00 PM and Kari Plante, from San Juan Basin Public Health will do presentation on Oral Health for Children on May 16<sup>th</sup> at 11:00 AM. A Grand Opening will be held on Saturday April 21<sup>st</sup> at the Library from 10:30 AM to Noon. **Refreshments will be provided by Southwestern CO AHEC, who is collaborating with the Library in the Discover Health Event.** For a full schedule of events, visit Cortez Library on Facebook or contact Eric Ikenouye 970-564-4072 [eikenouye@cityofcortez.com](mailto:eikenouye@cityofcortez.com)

*Discover Health/Descubre la Salud* was developed by the University of Colorado’s Area Health Education Centers (AHEC) Program Office, in collaboration with the STAR

## Library Education

Network (*STAR\_Net*; <http://www.starnetlibraries.org/>), and CLACE (<http://www.clace.us/>). *Discover Health/Descubre la Salud* is a bi-lingual informal education program funded by the National Institutes of Health Science Education Partnership Award (NIH SEPA; Grant Number: 5R25OD016482-04).



*pathways to health*

# Discover Health / Descubre la Salud Making Science FUN!

April 7 – July 2 at the Cortez Public Library  
**Event Schedule**

## Grand Opening

Saturday April 21, 2018 at 10:30am

Meet & Greet Dr John Pearsall  
Pediatrician May 2 @ 5pm

Oral Health for Kids with Kari Plante  
from SJBPH May 16 @ 11am

Story Times

Nutritional Health Workshops

Health Screenings

Check Library Facebook for  
Upcoming Events



**discover**<sup>™</sup>  
HEALTH

Descubre la Salud

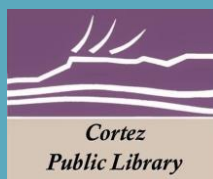
A FREE interactive bilingual exhibition  
that makes learning about health  
science topics fun for all ages!



University of Colorado  
Anschutz Medical Campus



**Cortez Public Library**  
202 N Park St  
Cortez, CO 81321



**FREE EVENT**  
**(970) 565-8117**



## Exhibition Tour Schedule

<b>Tour Dates</b>	<b>Host Library</b>	<b>AHEC Region</b>
Jan/Feb/Mar 2017 Arrives January 3 <sup>rd</sup>	Sterling Public Library 420 N 5 <sup>th</sup> St Sterling CO 80751	<b>Centennial</b>
Apr/May/Jun 2017 Arrives April 4 <sup>th</sup>	Riverside Library and Cultural Center 3700 Golden St Evans, CO 80620	<b>Centennial</b>
July/Aug/Sep 2017 Arrives July 5 <sup>th</sup>	Aurora Public Library 14949 E Alameda Pkwy Aurora, CO 80012	<b>Central</b>
Oct/Nov/Dec 2017 Arrives October 3 <sup>rd</sup>	Pueblo Public Library Rawlings Branch 100 E. Abriendo Ave Pueblo, CO 81004	<b>Southeastern</b>
Jan/Feb/Mar 2018 Arrives January 2 <sup>nd</sup>	Alamosa Public Library 300 Hunt Ave Alamosa, CO 81101	<b>San Luis Valley</b>
Apr/May/Jun 2018 Arrives April 3 <sup>rd</sup>	Cortez Public Library 202 N Park St Cortez CO 81321	<b>Southwestern</b>
July/Aug/Sep 2018 Arrives July 3 <sup>rd</sup>	Mesa County Libraries Central Library 443 N 6 <sup>th</sup> St Grand Junction, CO 81501	<b>Western</b>
Oct/Nov/Dec 2018 Arrives October 2 <sup>nd</sup>	Delta Public Library 211 W 6 <sup>th</sup> St Delta, CO 81416	<b>Western</b>
Jan/Feb/Mar 2019 Arrives January 2 <sup>nd</sup>	Rifle Branch Library 207 East Avenue Rifle, CO 81650	<b>Western</b>

Discover Health is funded by a SEPA award from the National Institutes of Health (NIH)

**SEPA** SCIENCE EDUCATION PARTNERSHIP AWARD  
Supported by the National Institutes of Health

Discover Health Partner Organizations:







**ECER CONFERENCE**  
**BEAVER RUN RESORT & CONFERENCE CENTER,**  
**BRECKENRIDGE, CO**

***Join us for poster presentations, workshops for CME/CE credit,  
networking with colleagues,  
and family fun time in the picturesque town of Breckenridge.  
We look forward to seeing you in September!***

## Schedule of Events

### Friday, September 21, 2018

12:00pm - 7:00pm	Registration
1:25pm - 1:30pm	Conference Opening
2:00 pm - 3:15pm	Lightning Round Research I
3:15pm - 3:30pm	Transition Break
3:30pm - 5:00pm	Lightning Round Research II Networking
6:00pm - 8:00pm	Reception and Poster Session

### Saturday, September 22, 2018

7:30am - 8:30am	Program Specific Networking Breakfast
8:30am- 8:45am	Transition Break
8:45am - 9:00am	Conference Welcome
9:00am - 10:00am	Keynote speaker Dr. Montori
10:00am - 10:15am	Transition Break
10:15am - 11:15am	Break out sessions A
11:15am - 11:30am	Transition Break
11:30am - 12:30pm	Break out sessions B
12:30pm-12:45pm	Pick up Lunch
12:45pm - 2:00pm	Plenary "Let's talk Opioids"
3:00pm - 4:30pm	CCTSI Session
3:00pm - 5:00pm	Scavenger Hunt
6:30pm - 8:00pm	Cash Bar
7:00pm - 9:00pm	Banquet

### Sunday, September 23, 2018

8:00am - 9:00am	Regional Networking Breakfast
9:00am - 9:15am	Transition Break
9:15am - 11:30am	Program Specific Programming
11:30am	Conference Adjourns



# Sponsorship/Advertising Opportunities

**COLORADO**  
**AHEC**  
Engaging Communities in

Education & Research

September 21-23, 2018



**ECER**

The 2018 *Engaging Communities in Education and Research* Conference convening in Breckenridge, Colorado, September 21-23, attracts over 500 Colorado Health Providers, University of Colorado Rural Faculty, Community Researchers and Members from around the State of Colorado.

The 2018 *Engaging Communities in Education and Research* Conference will build upon the partners strong foundation of leadership as we move forward to address the increased demands of healthcare needs of our state.

It draws an inclusive blend of attendees as a result of our

position as advocates of diversity among the health professions and research and allows you contribute to discussions regarding development healthcare and health education.

We invite you to participate in the 2018 *Engaging Communities in Education and Research Conference* through a variety of sponsorship and advertising opportunities. There are **several options available for participation**.

Your involvement benefits the community as well as the professionals in attendance.



To secure your sponsorship via credit card visit: [www.ucdenver.edu/coahec](http://www.ucdenver.edu/coahec)

You may also mail a check to:

Colorado AHEC Program  
c/o Patti Jo Wagner  
MS F433  
13120 E. 19<sup>th</sup> Ave.  
Aurora CO, 80045  
*write ECER in the memo line*

Please call or e-mail Matt Hess if you have any questions or ideas for a customized sponsorship.  
303.724.0533 [Matthew.Hess@ucdenver.edu](mailto:Matthew.Hess@ucdenver.edu).

# Conference Sponsorship/ Advertising Opportunities

## Gold Sponsor —\$ 10,000

- ◆ Company banner (Provided by sponsor) up to 10' displayed prominently at registration booth and main conference room.
- ◆ 6' skirted table exhibit space in a prominent location at the conference.
- ◆ 2 staff conference registrations.
- ◆ Acknowledgement during banquet dinner Saturday night.
- ◆ Full page ad space in Conference Guide (approved by conference planning committee).
- ◆ Recognition on Conference web page and COAHEC facebook page with logo and link.
- ◆ Free internet during the conference.
- ◆ Logo on posters at conference for exhibitors/sponsors.
- ◆ Distribution of promotional items (provided by sponsor) in attendees welcome package.

## Keynote Sponsorship— \$2500

- ◆ Your organization will introduce the keynote speaker.
- ◆ Company logo on screens before and after the Keynote, banner (provided by sponsor) displayed prominently in and around registration booth and main conference room.
- ◆ Recognition on conference page and COAHEC facebook page with logo and link.
- ◆ Distribution of promotional items (provided by sponsor) in attendees welcome package.

## Product Branding

- ◆ **Attendee Notebook** - Your organization will be remembered again and again as participants re-use this handsome Notebook with your organization's logo along side the conference name and date. \$6,500
- ◆ **Attendee Bag** - Re-useable bag imprinted with your organization's logo along side the conference name and date. \$3,500
- ◆ **Attendee Water Bottles**— Water bottle imprinted with your organization's logo along side the conference name and date, \$3,000
- ◆ **Wi-Fi Sponsor**— Splash page with link to your site when using Wi-Fi, \$1500

## Silver Sponsor —\$ 5,000

- ◆ Company banner up to 8' (provided by sponsor) displayed prominently at registration booth and main conference room.
- ◆ 6' skirted table exhibit space at the conference
- ◆ 1 staff conference registrations
- ◆ 1/2 page ad space in Conference Guide (approved by conference planning committee).
- ◆ Recognition on Conference page and COAHEC facebook page with logo and link.
- ◆ Logo on posters and promotional materials for exhibitors/sponsors.
- ◆ Free internet during the conference.
- ◆ Distribution of promotional items (provided by sponsor) in attendees welcome package.

## Vendor/Conference Package

- ◆ 6' Vendor Table \$600
- ◆ 6' Vendor Table and 1 conference registration, \$850; additional conference registrations, \$250 each .

## Bronze Sponsor—\$ 2,500

- ◆ Company banner (Provided by sponsor) up to 6' displayed prominently at registration booth and main conference room.
- ◆ 1/4 page ad space in Conference guide (approved by conference planning committee).
- ◆ Recognition on Conference page and COAHEC facebook page with logo and link.
- ◆ Logo on posters at conference for exhibitors/sponsors.
- ◆ Distribution of promotional items (provided by sponsor) in attendees welcome package.
- ◆ Free internet at the conference.

Deadline for Sponsorships or Advertising  
is August 1, 2018

For more information please contact  
Matt Hess at 303-724-0533 or  
matthew.hess@ucdenver.edu





## Summer Health Careers Camp



June 10-16, 2018

[www.swcahec.org](http://www.swcahec.org)

# Summer Health Career's Camp June 10-16, 2018

## *Be the Future of Healthcare!*



## Calling all 9th, 10th, and 11th Graders! ~ One Week of Fun Summer Camp! ~

### EXPLORE THE POSSIBILITY OF A CAREER IN HEALTHCARE

*Learn healthcare through hands-on activities*

*Visit health facilities and shadow a professional*

*College campus living - 5 nights at Fort Lewis College*

*Make new friends from all over Southwest Colorado*

**Register Now! Scholarships available!**

**Visit [swcahec.org](http://swcahec.org) or call (970) 426-4284**



Southwestern Colorado



**AHEC**  
Area Health Education Center



University of Colorado  
Anschutz Medical Campus

*SWCAHEC is a 501c3, non-profit organization improving quality and accessibility to health-related education*



# Could Social Screening Be the Key to Improving Overall Health?

## Try the Accountable Health Communities Easy Screening Tool



*Together, we can empower and improve the social, emotional and physical health of Western Coloradans!*

## Why Participate?

**Systematic screening for social needs in clinical sites has the potential to:**

- **Inform Clinical Care:** Knowing a patient's overall priorities and challenges can help define the right clinical course of action.
- **Reframe Health Conversations:** Talking about basic necessities like food and housing signals to patients that this is important to their overall health.
- **De-stigmatize Use of Community Services:** Normalizing community services in clinical settings can reduce stigma.

## How Does It Work?

- The Accountable Health Communities tool screens patients for food, housing, transportation, utilities, interpersonal violence and social isolation.
- The tool is SIMPLE to use! Just answer a few questions and enter the data electronically.
- The system then identifies the patient's challenges, outputs a list of helpful resources within the community and / or will connect them with a Patient Navigator for guidance.

*Help us address social disparities by giving patients "A Guide to Better Health"*  
*Visit [www.rmhpcommunity.org](http://www.rmhpcommunity.org) to learn more*



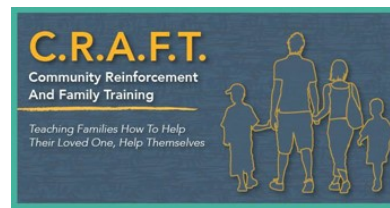
Laura C. Warner, MD, MPH | San Juan Basin Public Health | [lwerner@sjbpublichealth.org](mailto:lwerner@sjbpublichealth.org) | 970-335-2067  
Russelyn Connor, DNP, RN, CNS | SWCAHEC | [russelyn.connor@swcahec.org](mailto:russelyn.connor@swcahec.org) | 970-426-4284

# Families of opioid users: We need you!

Providers in your area are offering group and individual sessions for families of opioid users **AT NO COST!** We WELCOME families whose loved ones are actively using heroin or prescription opioids, as well as families of individuals in recovery from opioid use.

The Colorado Department of Human Services, Office of Behavioral Health is offering these trainings through a federal grant, the State Targeted Response to the Opioid Crisis. The grant seeks to expand services to include more treatment for opioid use disorders, more providers of medication-assisted treatment and more prevention services for families.

We need your help to spread the word!



**Community Reinforcement and Family Training (CRAFT) was developed with the belief that family can play a powerful role in helping to engage the substance user to enter and stay in treatment.**

**In addition, it is often the substance user who reports that family pressure or influence is the reason they sought treatment. Families also benefit by becoming more independent and reducing their depression, anxiety and anger symptoms even if their loved one does not enter treatment.**

**CRAFT uses a positive approach, emphasizes learning new skills to cope with old problems. Some of the components include how to stay safe, how to use positive reinforcers (rewards) and how to let the substance user address the natural consequences for their using behavior. Ages 3—Adult**



**Celebrating Families is a parenting skills training program designed for families in which one or both parents are in early stages of recovery from substance use.**

**Group topics include: healthy living; communication; working with feelings and defenses; anger management; facts about alcohol, tobacco and other drugs; the effects of chemical dependency on the whole family; goal-setting; healthy choices and healthy boundaries; and individual uniqueness.**

**Program goals are: break the cycle of substance abuse within families; decrease substance use and reduce substance use relapse; and increase family bonding time. Ages: Adult**

For information on where to attend a group (or for providers, how to offer a group) contact the Managed Service Organization (MSO) Partner for your county listed below

## Managed Service Organizations: by County

**AspenPointe Health Network Chaffee, Custer, Douglas, El Paso, Fremont, Lake, Park, and Teller Counties:** P 719.572.6100 115 S. Parkside Dr. Colorado Springs, CO 80910

**Mental Health Partners Boulder County:** P 303.443.8500 1333 Iris Ave. Boulder, CO 80304

**Signal Behavioral Health Network Cheyenne, Clear Creek, Conejos, Costilla, Crowley, Denver, Elbert, Gilpin, Huerfano, Jefferson, Kiowa, Kit Carson, Larimer, Las Animas, Lincoln, Logan, Mineral, Morgan, Otero, Phillips, Prowers, Pueblo, Rio Grande, Saguache, Sedgwick, Washington, Weld, and Yuma Counties:** P 303.639.9320 6130 Greenwood Plaza Blvd., Suite 150 Greenwood Village, CO 80111

**West Slope Casa Archuleta, Delta, Dolores, Eagle, Garfield, Grand, Gunnison, Hinsdale, Jackson, La Plata, Mesa, Moffat, Montezuma, Montrose, Ouray, Pitkin, Rio Blanco, Routt, San Juan, San Miguel, and Summit Counties:** P 970.945.8661 P.O. Box 3410 Glenwood Springs, CO 81602-3410





# Pre-Health Faculty and Advisors Training

June 14<sup>th</sup> 8:00 AM to 5:00 PM  
On the University of Colorado  
Anschutz Medical Campus

We have made some exciting changes to this year's Pre-Health Faculty and Advisors Training. In response to some valuable feedback we are moving to a more interactive and condensed one day format.

**The event will be held June 14<sup>th</sup> in the beautiful Fulginiti Pavilion on the Anschutz Medical Campus. Registration and breakfast will begin at 7:30 AM and the program will start at 8:00 AM. We will close at 5:00 PM after a full day of touring our facilities, connecting with faculty and staff from this and other medical campuses, and getting inspiration from the next generation of health care leaders.**

The program still aims to help undergraduate and high school pre-health advisors improve their understanding of what is required of students entering health care careers (e.g. Dentistry, Medicine, Nursing, Pharmacy, Physician Assistant, etc.) particularly for those interested in serving in rural and urban underserved communities.

This event is a completely free opportunity to gather valuable information about leading students in their pursuit of health careers.

If you are needing a hotel room, please reserve your space by May 15<sup>th</sup>. The final day to register will be June 1<sup>st</sup>.

Register by following this link.

<https://formstack.io/0AE64>

If you have any questions, contact Matt Hess [matthew.hess@ucdenver.edu](mailto:matthew.hess@ucdenver.edu) 303-724-0533.

Sponsored by:



# Rural and Frontier Health Care Preceptor Tax Credit

## What you need to know

Here is everything you need to know about how to take advantage of this exciting new incentive aimed at increasing the rural primary healthcare workforce!

WHO can take advantage? and WHAT do I get?

### WHO is Eligible?

Only Primary Care preceptors from the following disciplines are eligible:

- Family Medicine Physicians
- Internal Medicine Physicians
- Pediatricians
- Physician Assistants working in family medicine, internal medicine, or pediatrics
- Advanced Nurse Practitioners working in family medicine, internal medicine, or pediatrics
- Dentists

### WHAT?

# \$1,000

tax credit against taxes owed per income year for an eligible preceptorship provided during the tax year in which the credit is claimed.

### WHEN?

Eligible preceptorships taking place in tax income years 2017-2019.

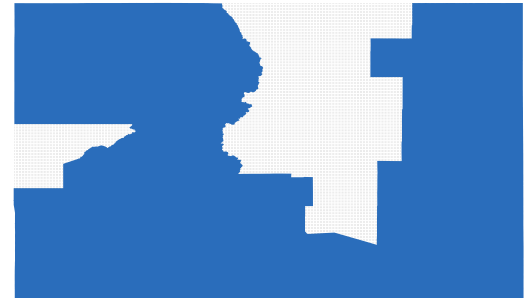


### WHERE do I have to be precepting?

Only preceptors working in a rural or frontier designated county are eligible for the tax credit. You can refer to the list below to identify rural and frontier counties in Colorado:

Rural: Alamosa, Archuleta, Chaffee, Conejos, Crowley, Delta, Eagle, Fremont, Garfield, Grand, La Plata, Lake, Logan, Montezuma, Montrose, Morgan, Otero, Ouray, Phillips, Pitkin, Prowers, Rio Grande, Routt, Summit

Frontier: Baca, Bent, Cheyenne, Costilla, Custer, Dolores, Gunnison, Hinsdale, Huerfano, Jackson, Kiowa, Kit Carson, Las Animas, Lincoln, Mineral, Moffat, Rio Blanco, Saguache, San Juan, San Miguel, Sedgwick, Washington, Yuma



### HOW do I get started?

Instructions for preceptors and certifying bodies are on the back of this flyer. If you are accessing this flyer electronically, the links are live so you can click and get started!

### Additional details

- The aggregate amount of the tax credit awarded cannot exceed \$1,000 per income tax year, regardless of the number of preceptorships provided.
- The preceptorship must last a total of not less than 28 days during the income year.
- A preceptor may precept multiple eligible students to satisfy the preceptorship duration requirements.
- No more than 200 eligible preceptors per year are entitled to claim the credit.
- If the amount of the credit exceeds the amount of income tax owed, the amount of the credit not used will not be refunded to the tax payer, but may be carried forward and applied against the income tax due in the next five succeeding income tax years.
- The regional AHEC may charge a fee for certification of the tax credit



# How to Claim the Credit



## PRECEPTORS

1. Complete rotation with a student for a minimum of four weeks (28 days).
2. Complete the Rural and Frontier Health Care Preceptor Tax Credit form (leaving social security number blank). The form can be accessed through each of the regional AHEC's website or CRHC's website (<http://coruralhealth.org/preceptor-survey>). If you access the form via the CRHC website, you will be prompted to complete a survey. Data from the survey will be used in advocacy efforts to support continuation of the credit, so please participate!
3. Submit the form to a certifying body which includes any of the regional AHECs and health professional schools.
4. The tax credit form will be certified and sent back to you.
5. Add your social security number and submit the form to the Department of Revenue (DOR) via: [dor\\_preceptor@state.co.us](mailto:dor_preceptor@state.co.us)
6. DOR will contact you with notification of approval or denial of the credit. This may take up to a month and credits are first come first served, so it is recommended you complete the certification process as soon as the eligible rotation is completed.
7. File the certified tax credit form during the next tax filing cycle of that year. The tax cycle does not end at the end of the calendar year, but rather by the end of the tax filing period (mid-April).

## CERTIFIERS (Clinical Coordinator or AHEC)

1. If the preceptor has not completed the Rural and Frontier Health Care Preceptor Tax Credit form themselves, complete and certify the form leaving the social security number blank. We would recommend the authorization going through AHEC or your own university. It is advised that the university designate one person and there is a policy to formalize the process.
2. Send the certified form back to the preceptor with the following instructions:
  - Add your social security number to the certified form
  - Send the completed form to the Department of Revenue (DOR) for approval at: [dor\\_preceptor@state.co.us](mailto:dor_preceptor@state.co.us)
  - The DOR will provide either approval or denial. This may take up to a month and credits are first come first served, so it is recommended you complete the certification process as soon as the eligible rotation is completed.
  - If the tax credit is approved by the DOR, file the certified tax credit form during the next tax filing cycle of that year.
  - Complete the Preceptor Tax Credit Survey online (<http://coruralhealth.org/preceptor-survey>) to ensure the tax credit will be funded by the Colorado General Assembly in the future.
3. Please continue to internally collect the data submitted to CRHC in 2016 regarding how many preceptors your students are using and how many more are in need. In addition to that, please collect data on students who take jobs following school in rural areas. This will be valuable information used in advocacy efforts to support the continuation of the credit.



# Opioid Anti-Stigma Campaign Launch Set for May 14



**What:** The State of Colorado's new opioid anti-stigma campaign, Lift the Label, aims to remove the damaging labels and stigmas applied to people with opioid addiction that prevent them from seeking treatment.

**When:** Monday, May 14 from 10:30 to 11:30 a.m.

**Where:** Civic Center Park along North Broadway Street between West Colfax Avenue and West 14th Avenue

**Speakers:** Colorado Governor John Hickenlooper, Colorado Department of Human Services Executive Director Reggie Bicha, Colorado Department of Public Health and Environment Executive Director Larry Wolk, Colorado Department of Health Care Policy and Financing Executive Director Kim Bimestefer and Coloradans sharing their personal stories of addiction and recovery.

**RSVP:** An RSVP is not required.

The event will also include opportunities to learn about treatment options, sign up for campaign materials and contribute names to an opioid wall in memory of those who have died from opioid overdoses.

# LIFT THE LABEL



**COLORADO**  
Department of Human Services

# Elbert County moved from Central to Centennial to better align with Health Statistics regions.

WCAHEC:  
Western

CCAHEC:  
Central

CAHEC:  
Centennial

## COAHEC Mission:

***Diversity:*** Increase the potential for secondary, college, and health profession students from underrepresented populations, educationally disadvantaged, and rural backgrounds to successfully pursue a health profession career with an emphasis in public health;

***Distribution:*** Increase the potential for health profession students in medicine, dentistry, nursing, pharmacy, public health and allied health to practice in a rural or urban underserved community by immersing them in underserved community experiences through Community-Based Education Training Programs, Field Placements, and Interprofessional Education and Training; provide access to evidenced-based health information, accredited high quality continuing education programs and support for health practitioners serving in rural and medically underserved areas in Colorado; and,

***Practice Transformation:*** Facilitate and support practice transformation of Colorado's healthcare system by promoting a patient-centered approach, addressing social determinants of health through a team-based, data-centered method with a focus on improving quality and community health outcomes in rural and medically underserved areas.

SWCAHEC:  
Southwestern

SLVAHEC:  
San Louis Valley

SEAHEC:  
Southeastern



## Contact Us



### Centennial Colorado AHEC

[www.cahec.org](http://www.cahec.org)  
 4650 West 20th St Suite A  
 Greeley CO 80634  
 (970) 330-3608  
 (970) 330-3698 Fax



### Southeastern Colorado AHEC

[www.secahec.org](http://www.secahec.org)  
 503 N. Main, Suite 221  
 Pueblo, CO 81003-6107  
 (719) 544-7833  
 (719) 544-7955 Fax



### Central Colorado AHEC

[www.ccahec.org](http://www.ccahec.org)  
 10200 E. Girard Avenue, Suite B131  
 Denver, CO 80231  
 (303) 481-8686  
 (303) 481-8554 Fax



*pathways to health*

### Southwestern Colorado AHEC

[www.swcahec.org](http://www.swcahec.org)  
 701 Camino del Rio, Suite 316  
 Durango CO 81301-5596  
 (970) 375-3250  
 (970) 375-3247 Fax



### San Luis Valley AHEC

[www.slvahec.org](http://www.slvahec.org)  
 300 Ross Avenue, P.O. Box 1657  
 Alamosa, CO 81101  
 (719) 589-4977  
 (719) 589-4978 Fax



### Western Colorado AHEC

[www.wcahec.org](http://www.wcahec.org)  
 2938 North Avenue, Unit B  
 Grand Junction, CO 81504-5797  
 (970) 434-5474  
 (970) 434-9212 Fax

### Colorado AHEC Program Office

[www.ucdenver.edu/coahec](http://www.ucdenver.edu/coahec)  
 13120 E 19th Ave MS-F433  
 Aurora CO 80045  
 (303) 724-0348  
 (303) 724-0891 Fax